

# POWER DISTRIBUTION

## Project examples

### Thompson River Co-Gen, LLC

CoGeneration Facility  
Thompson Falls, Montana

- 13.2kV distribution for station, boiler, & sawmill power
- 480V distribution
- EDSA power system analysis
- 13.2-115kV step-up substation & tie-in to utility 115kV transmission line
- Coordination of power system protection relays

### California Agriboard, LLC

Willows, California

- 20.8kV Substation, (2) 20MVA transformers, 5kV distribution switchgear
- 4.16 kV & 480V distribution, (10) secondary unit substations
- Complete SCADA power monitoring system
- Power management system
- Large MV (8000HP) & LV motor starting analysis
- Automatic power factor correction
- Harmonics reduction

### Louisiana-Pacific

Newberry, MI

- 12.47kV distribution, 7.5MVA total, (6) secondary unit substations
- Power short circuit analysis & load flow analysis to reduce short-circuit at 480V
- Power factor correction
- Large MV & LV motor starting analysis

### Pope & Talbot, Paper Mill

Halsey, Oregon

- Power system analysis included an energy audit, load flow & short circuit analysis, protective device coordination study, and large motor starting

### Oregon Steel Co., Steel Mill

Portland, Oregon

- 12.47kV distribution, 21MVA total, (2) secondary unit substations
- 4.16kV & 480V distribution

### J.M. Huber

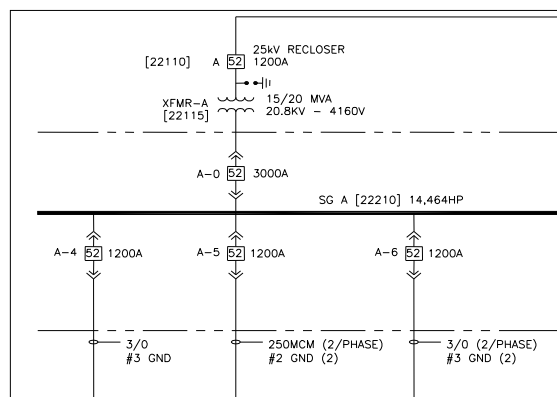
OSB Plant (New Plant)  
Whites Creek, Tennessee

- 12.47kV distribution, 25MVA total, (5) secondary unit substations
- 4.1 6kV & 480V distribution
- EDSA short circuit analysis, load flow analysis, and coordination scheme
- Power factor correction

### Trus Joist

Junction City, Oregon & Elma, Washington

- Power survey: metering; motor database & one-line development
- Power short circuit analysis and load flow analysis
- Power factor correction



**EVERGREEN ENGINEERING**

Eugene, Oregon (541) 484-4771 • Atlanta, Georgia (404) 267-1471

[www.evergreenengineering.com](http://www.evergreenengineering.com)